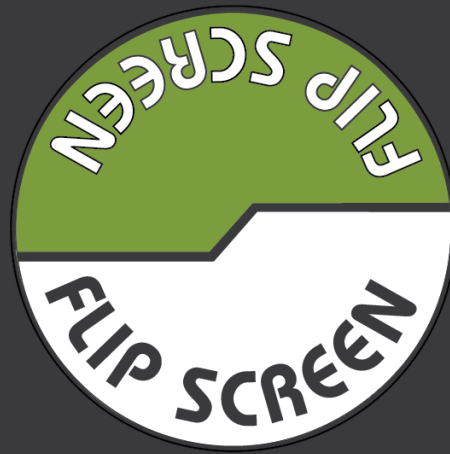


FLIPSCREEN

Product Catalog 2022



The world's Best Screening Attachment!

INDEX

Click section to jump to page

1. Excavator Buckets

2. Loader Buckets

3. Skid Steer Buckets

4. Fertscreens

5. Mesh Sizes

6. Features



2.5 - 5.5t

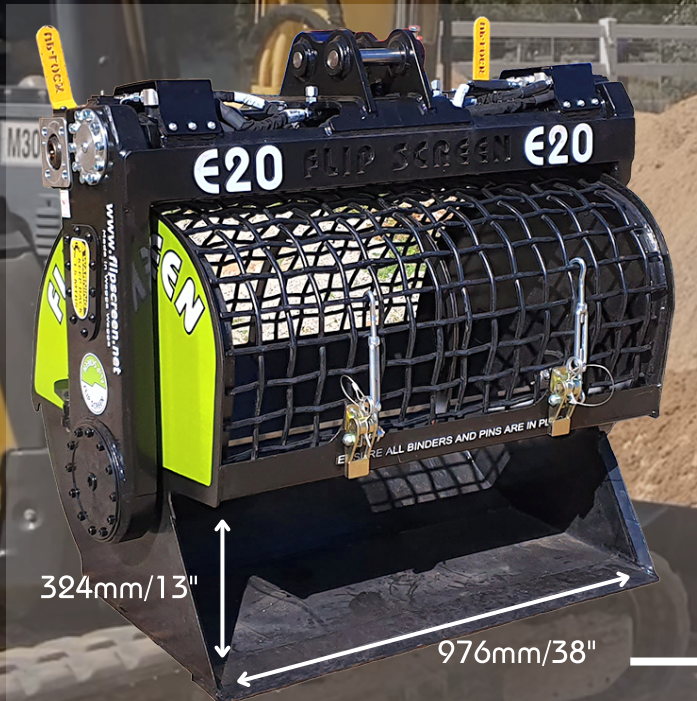
Screens 31 yd³/24 m³ per hour based on 2"/50mm mesh.



Height
54"/136 cm

Width
45"/114 cm

Length
32"/81 cm



E20

0.2 m³
0.26 yd³
Scoop Size

0.6 m³
0.78 yd³
Total Volume

245 Kg
540 lb
Weight

1.2 m²
12.9 ft²
Mesh Size



5.5 - 10t

Screens 47 yd³/36 m³ per hour based on 2"/50mm mesh.



Height
55"/140cm

Width
45"/114cm

Length
52"/131cm



E30

0.3 m³
0.39 yd³
Scoop Size

0.9 m³
1.18 yd³
Total Volume

479 Kg
1056 lb
Weight

1.9 m²
20.5 ft²
Mesh Size





12 - 17t

Screens 78 yd³/60 m³ per hour based on 2"/50mm mesh.



Height
71"/180cm

Width
65"/165cm

Length
57"/144cm



E50

0.5 m³
0.65 yd³
Scoop Size

1.5 m³
1.96 yd³
Total Volume

1012 Kg
2231 lb
Weight

3 m²
32.3 ft²
Mesh Size





18.5 - 25t

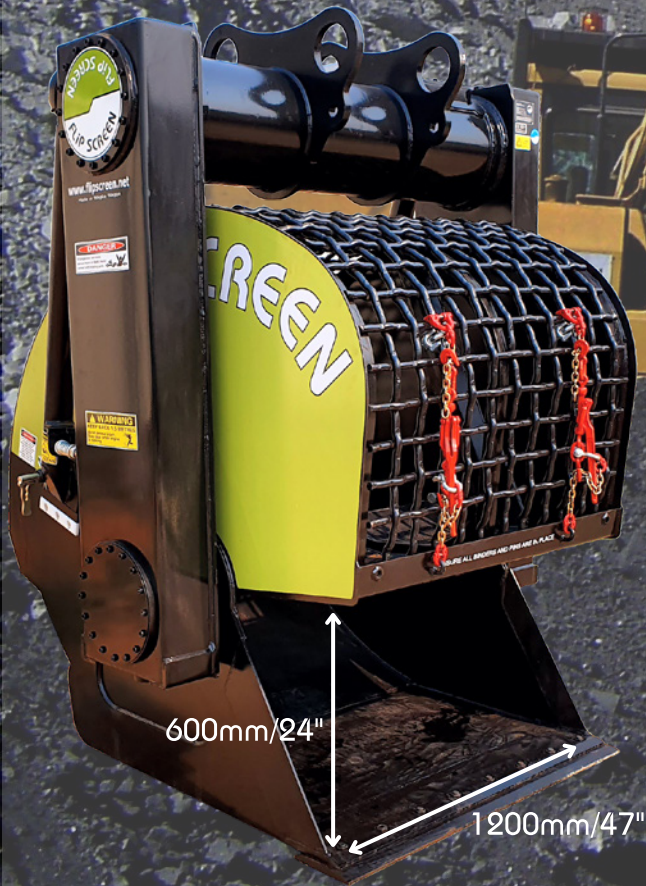
Screens 120 yd³/96 m³ per hour based on 2"/50mm mesh.



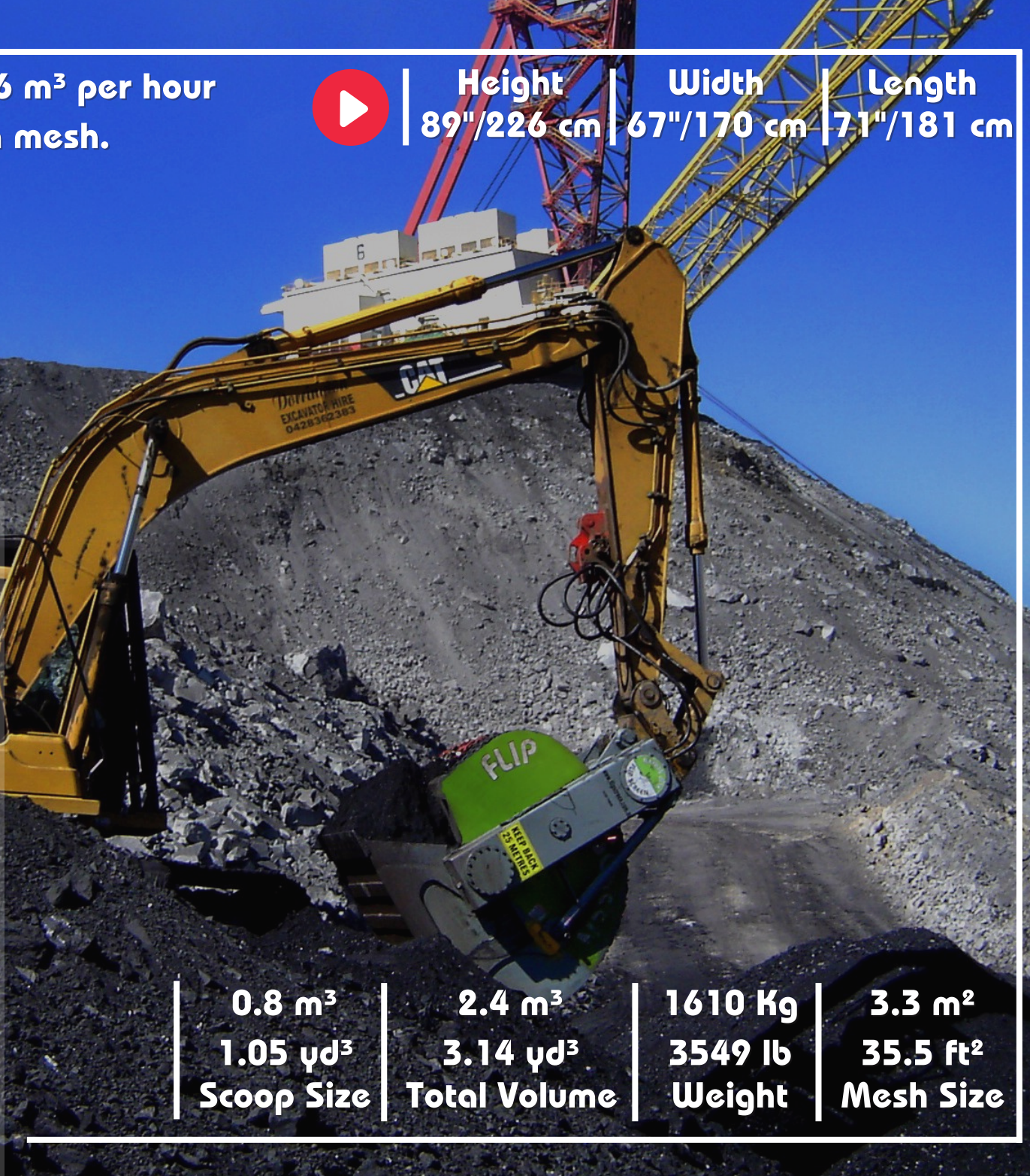
Height
89"/226 cm

Width
67"/170 cm

Length
71"/181 cm



083



0.8 m³
1.05 yd³
Scoop Size

2.4 m³
3.14 yd³
Total Volume

1610 Kg
3549 lb
Weight

3.3 m²
35.5 ft²
Mesh Size



22 - 27t

Screens 120 yd³/96 m³ per hour based on 2"/50mm mesh.



Height
89"/226 cm

Width
67"/170 cm

Length
71"/181 cm

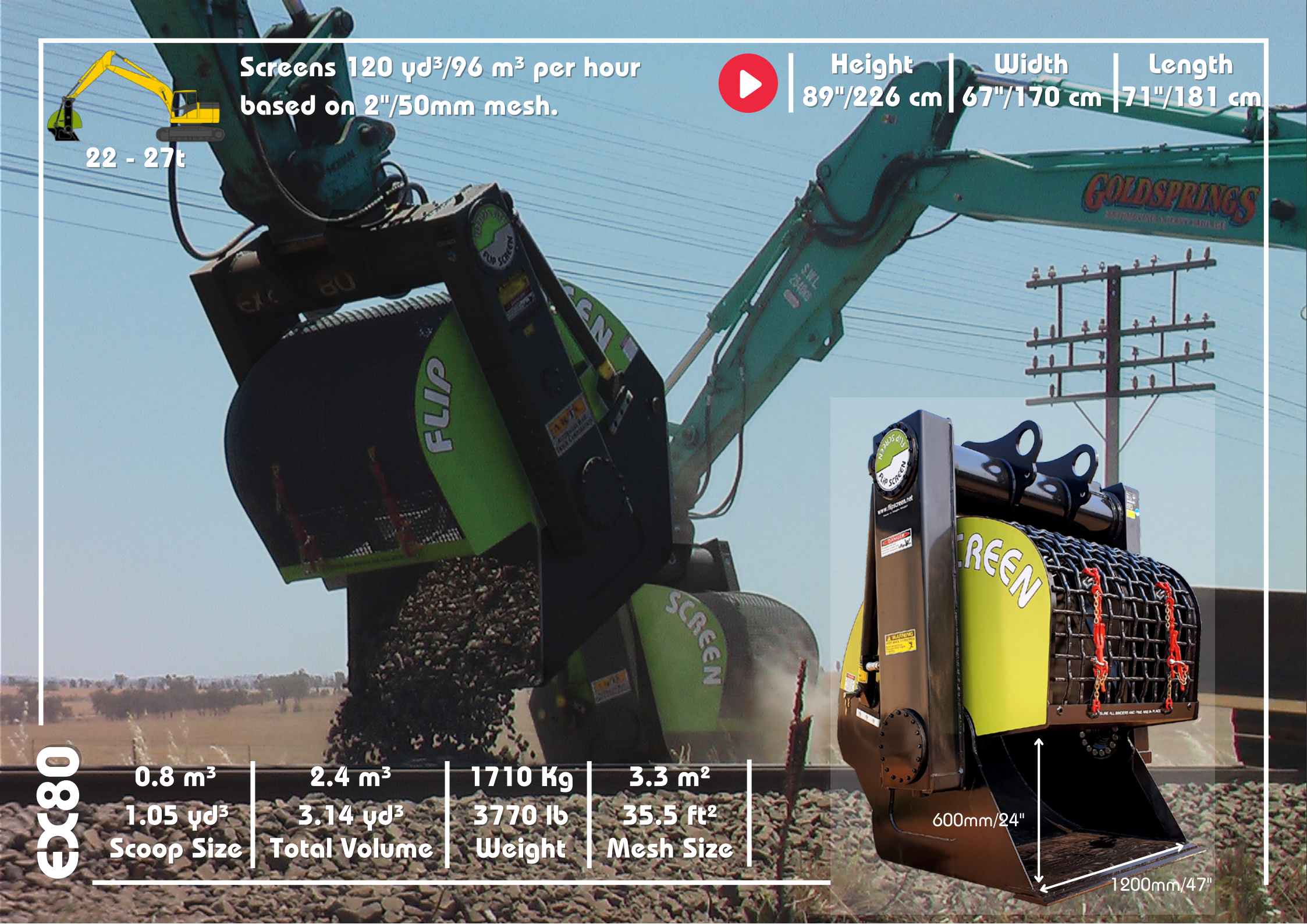
GC80

0.8 m³
1.05 yd³
Scoop Size

2.4 m³
3.14 yd³
Total Volume

1710 Kg
3770 lb
Weight

3.3 m²
35.5 ft²
Mesh Size





17.5- 25t

Screens 120 yd³/96 m³ per hour based on 2"/50mm mesh.



Height
76"/194 cm

Width
62"/158 cm

Length
73"/185 cm

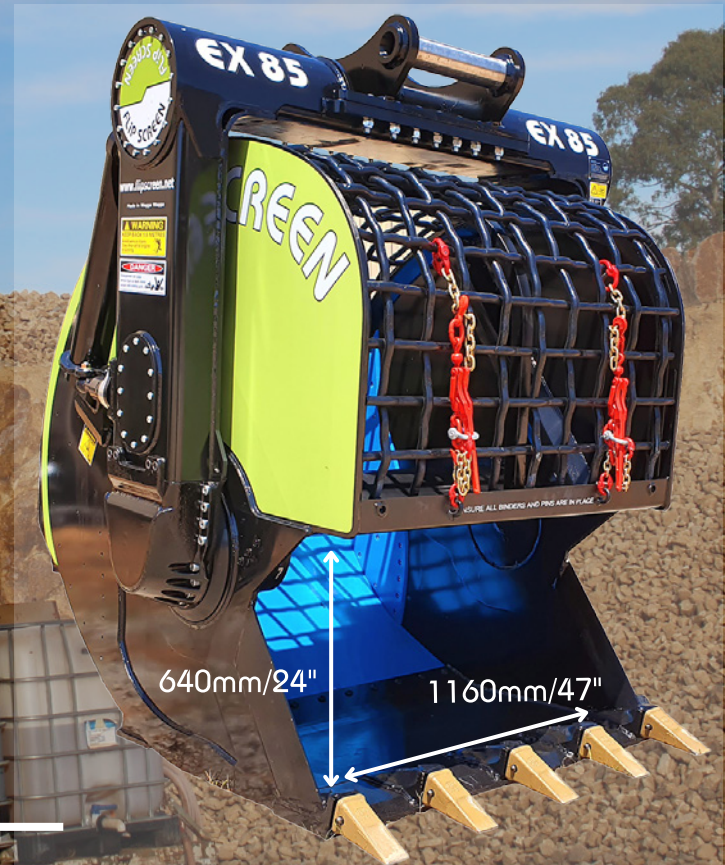
EX85D

0.85 m³
1.11 yd³
Scoop Size

2.55 m³
3.33 yd³
Total Volume

1410 Kg
3109 lb
Weight

3.3 m²
35.5 ft²
Mesh Size





26 - 30t

Screens 204 yd³/156 m³ per hour
based on 2"/50mm mesh.



Height
89"/226 cm

Width
91"/230 cm

Length
71"/180 cm



€140

1.4 m ³	4.2 m ³	2060 Kg	6.5 m ²
1.83 yd ³	5.5 yd ³	4542 lb	70 ft ²
Scoop Size	Total Volume	Weight	Mesh Size

600mm/24"

1830mm/72"



29 - 35t

Screens 204 yd³/156 m³ per hour
based on 2"/50mm mesh.

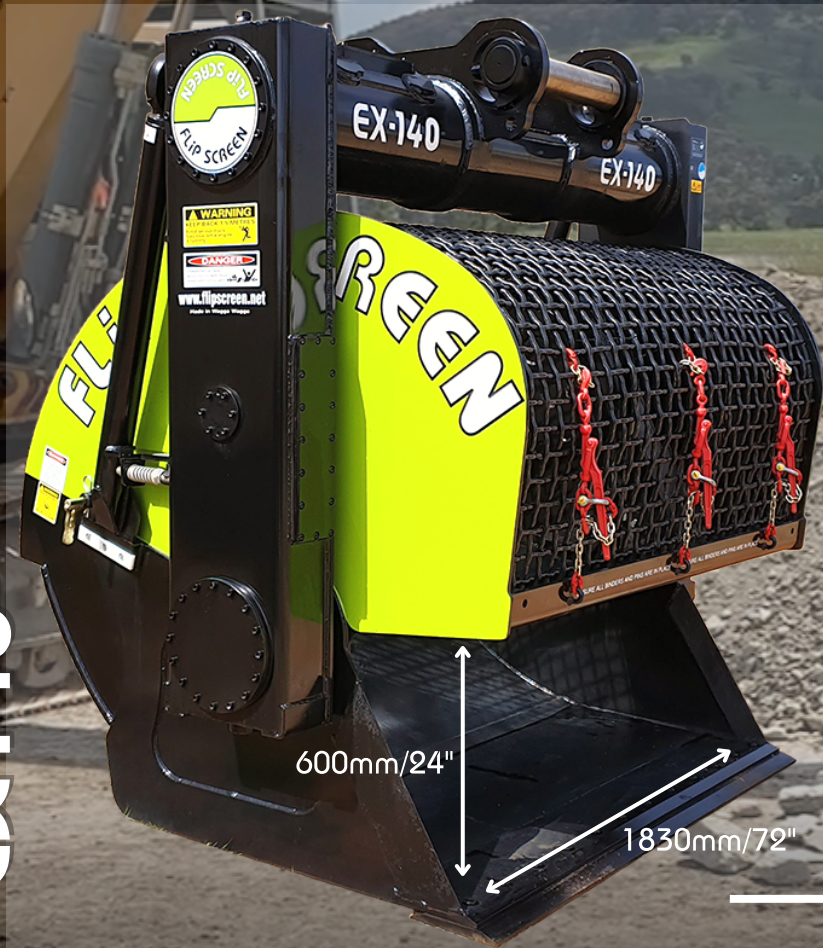


Height
89"/226 cm

Width
91"/230 cm

Length
71"/180 cm

EX140



1.4 m³
1.83 yd³
Scoop Size

4.2 m³
5.5 yd³
Total Volume

2273 Kg
5011 lb
Weight

6.5 m²
70 ft²
Mesh Size



27 - 35t

Screens 204 yd³/156 m³ per hour
based on 2"/50mm mesh.



Height
78"/198 cm

Width
86"/218 cm

Length
73"/185 cm

EX145D

1.45 m ³	4.2 m ³	2010 Kg	6.5 m ²
1.90 yd ³	5.5 yd ³	4542 lb	70 ft ²
Scoop Size	Total Volume	Weight	Mesh Size





0 - 1.5t

Screens 16 yd³/12 m³ per hour based on 2"/50mm mesh.



Height
26"/67 cm

Width
41"/105 cm

Length
38"/97 cm

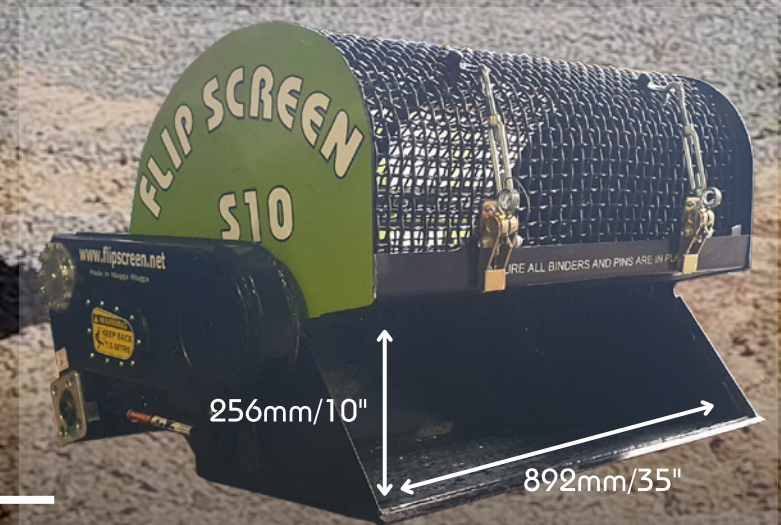
S10

0.1 m³
0.13 yd³
Scoop Size

0.3 m³
0.39 yd³
Total Volume

144 Kg
317 lb
Weight

0.9 m²
9.7 ft²
Mesh Size





1.5 - 2.5t

Screens 47 yd³/36 m³ per hour based on 2"/50mm mesh.



Height
31"/79 cm

Width
69"/176 cm

Length
40"/101 cm

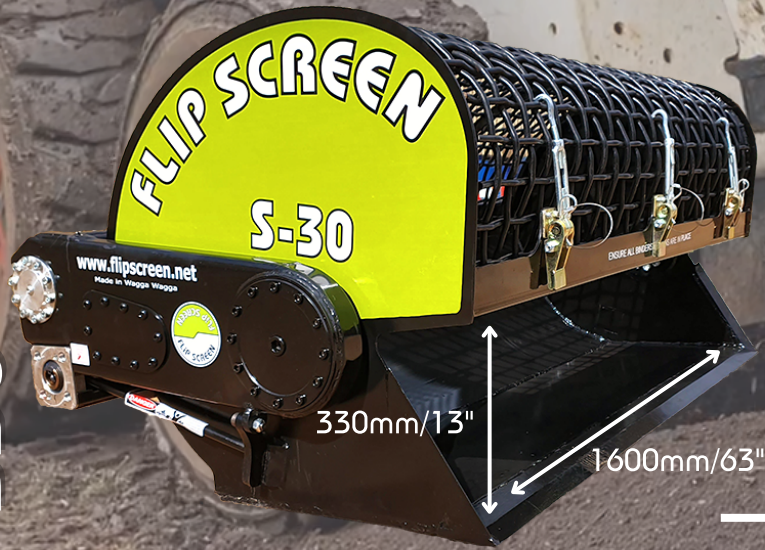
130
Bobcat

www.flipscreen.net
Made in Wagga Wagga



WARNING
KEEP BACK
1.5 METERS

FLIP SCREEN
S-30



FLIP SCREEN
S-30

www.flipscreen.net
Made in Wagga Wagga



330mm/13"

1600mm/63"

0.3 m³
0.39 yd³
Scoop Size

0.9 m³
1.18 yd³
Total Volume

347 Kg
765 lb
Weight

2.1 m²
22.6 ft²
Mesh Size

S30



3 - 4t

Screens 71 yd³/54 m³ per hour based on 2"/50mm mesh.

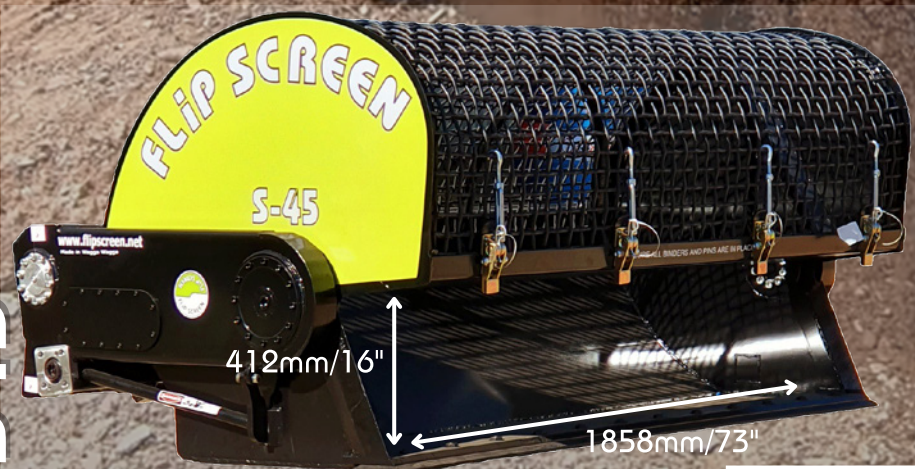


Height
39"/99 cm

Width
80"/203 cm

Length
52"/131 cm

S45



0.45 m³
0.59 yd³
Scoop Size

1.35 m³
1.77 yd³
Total Volume

578 Kg
1279 lb
Weight

3.2 m²
34.4 ft²
Mesh Size



5 - 9t

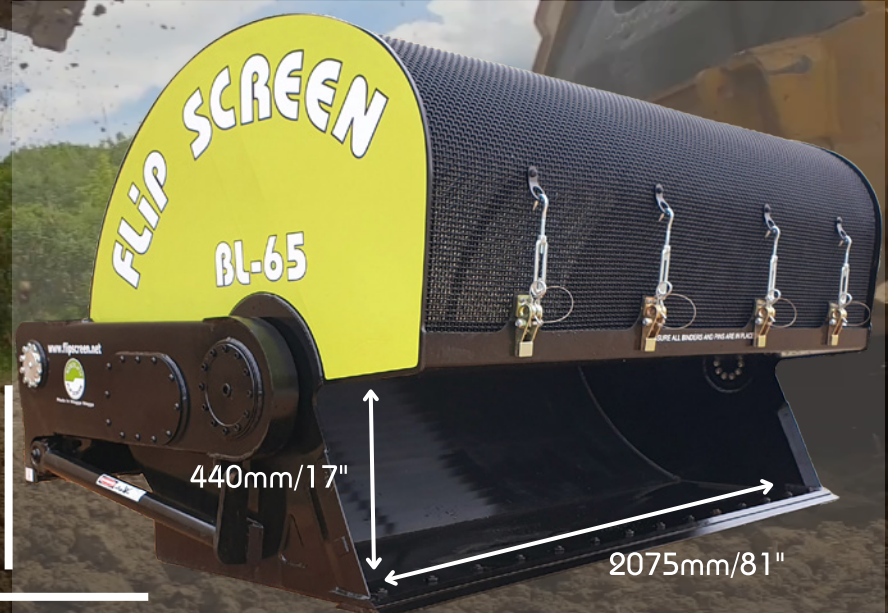
Screens 94 yd³/72 m³ per hour
based on 2"/50mm mesh.



Height	Width	Length
59"/151 cm	91"/232 cm	52"/131 cm

BL65

0.65 m ³	2.22 m ³	810 Kg	4.1 m ²
0.85 yd ³	2.90 yd ³	1786 lb	44 ft ²
Scoop Size	Total Volume	Weight	Mesh Size





Screens 120 yd³/96 m³ per hour
based on 2"/50mm mesh.



Height
54"/138 cm

Width
99"/251 cm

Length
67"/170 cm

BL80

0.8 m³
1.05 yd³
Scoop Size

2.4 m³
3.14 yd³
Total Volume

1275 Kg
2811 lb
Weight

4.6 m²
49.5 ft²
Mesh Size



560mm/22"

2130mm/84"



Screens 204 yd³/156 m³ per hour
based on 2"/50mm mesh.



Height
63"/160 cm

Width
97"/247 cm

Length
81"/205 cm

WL130

1.3 m³
1.7 yd³
Scoop Size

3.9 m³
5.1 yd³
Total Volume

1840 Kg
4057 lb
Weight

5.7 m²
61.4 ft²
Mesh Size

656mm/26"

2140mm/84"



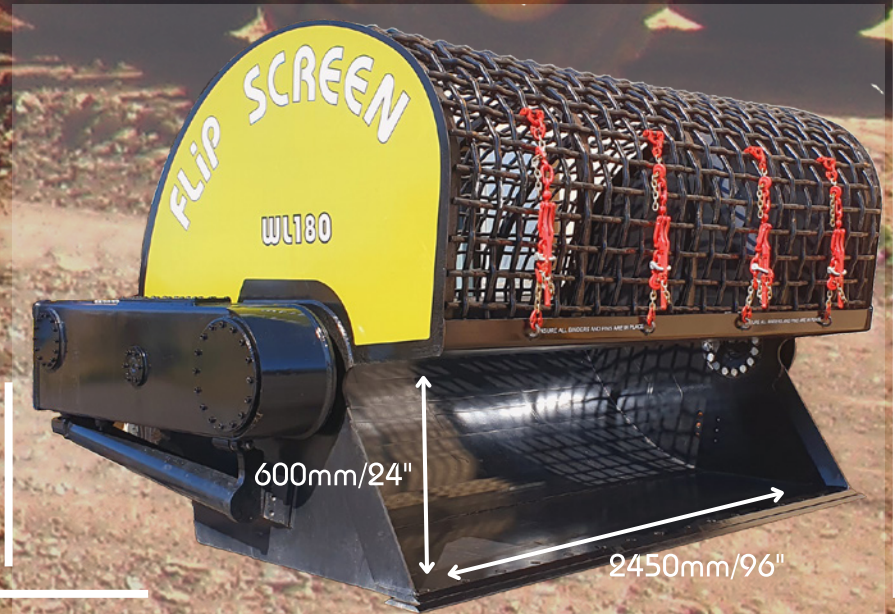


11 - 18t

Screens 276 yd³/216 m³ per hour based on 2"/50mm mesh.



Height	Width	Length
67"/169 cm	114"/290 cm	87"/220 cm



WL180

1.8 m ³	5.4 m ³	1720 Kg	6.8 m ²
2.35 yd ³	7.06 yd ³	3792 lb	73.2 ft ²
Scoop Size	Total Volume	Weight	Mesh Size



18 - 23t

Screens 276 yd³/216 m³ per hour
based on 2"/50mm mesh.



Height
67"/171 cm

Width
114"/290 cm

Length
87"/220 cm

WL180Q



1.8 m³
2.35 yd³
Scoop Size

5.4 m³
7.06 yd³
Total Volume

2495 Kg
5500 lb
Weight

6.8 m²
73.2 ft²
Mesh Size



11 - 23t

Screens 276 yd³/216 m³ per hour based on 2"/50mm mesh.



Height
67"/170 cm

Width
109"/277 cm

Length
83"/211 cm



WL185D

1.85 m³
2.42 yd³
Scoop Size

5.55 m³
7.26 yd³
Total Volume

2010 Kg
4431 lb
Weight

6.8 m²
73.2 ft²
Mesh Size



12 - 21t

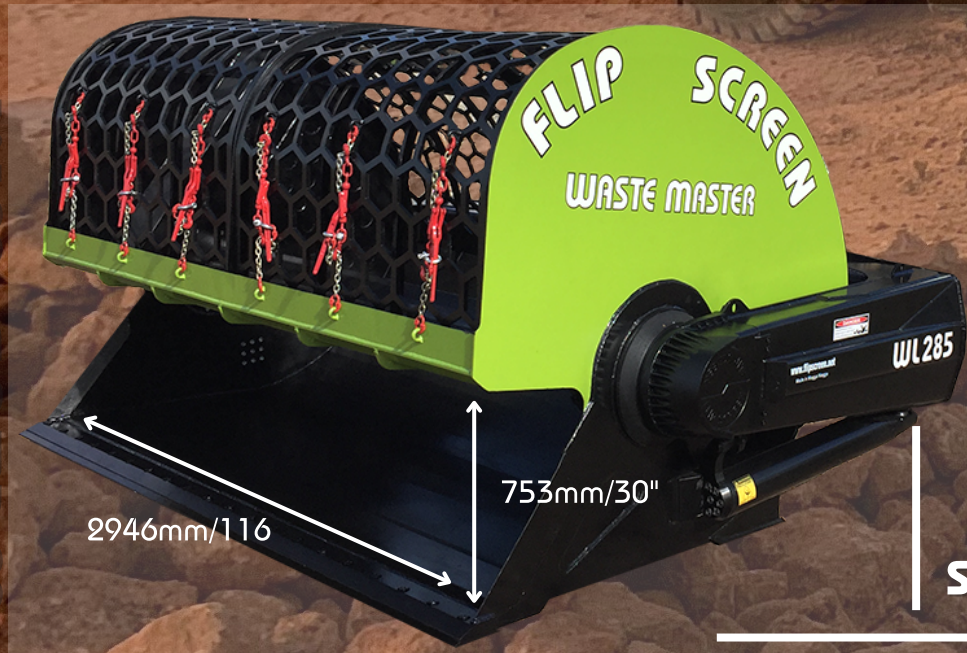
Screens 384 μd^3 /336 m^3 per hour based on 2"/50mm mesh.



Height	Width	Length
85"/216 cm	137"/348 cm	89"/227 cm



WL285 WM



2946mm/116"

753mm/30"

2.85 m^3	8.55 m^3	2950 Kg	10.2 m^2
3.72 μd^3	11.18 μd^3	6503 lb	110 ft^2
Scoop Size	Total Volume	Weight	Mesh Size



25 - 35t

Screens 384 yd³/336 m³ per hour based on 2"/50mm mesh.



Height
90"/228 cm

Width
143"/362 cm

Length
91"/232 cm

WL280



2946mm/116"

753mm/30"

2.8 m³
3.66 yd³
Scoop Size

8.4 m³
11 yd³
Total Volume

4400 Kg
9700 lb
Weight

10.2 m²
110 ft²
Mesh Size



3 - 6t

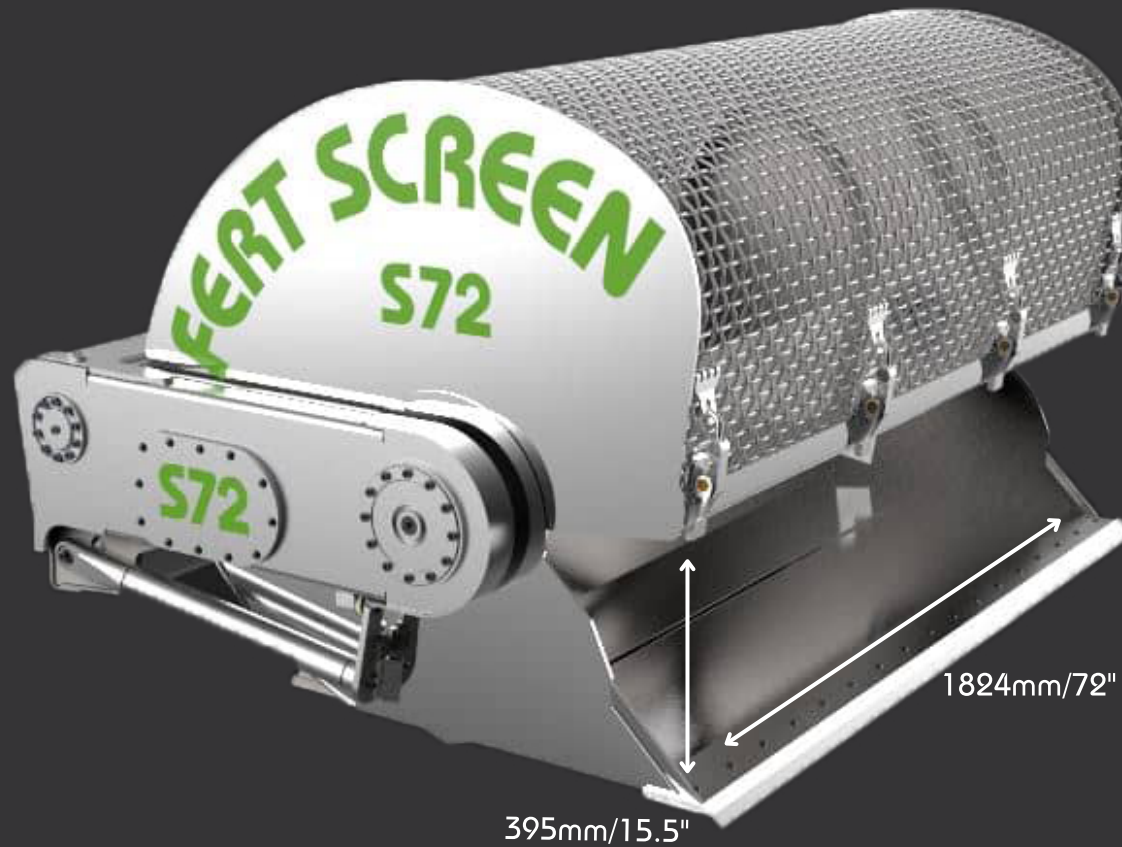
Screens 112 yd³/86 m³ per hour based on 2"/50mm mesh.



Height
44"/112 cm

Width
81"/205 cm

Length
59"/150 cm



S72 FS

0.72 m ³	2.16 m ³	470 Kg	2.92 m ²
0.94 yd ³	2.83 yd ³	1036 lb	31.4 ft ²
Scoop Size	Total Volume	Weight	Mesh Size



11 - 18t

Screens 283 yd³/216 m³ per hour
based on 2"/50mm mesh.



Height
75"/191 cm

Width
100"/255 cm

Length
94"/238 cm

WL225 FS

2.25 m ³	6.75 m ³	2060 Kg	6.93 m ²
2.94 yd ³	8.83 yd ³	4542 lb	74.6 ft ²
Scoop Size	Total Volume	Weight	Mesh Size



760mm/30"

2344mm/92"



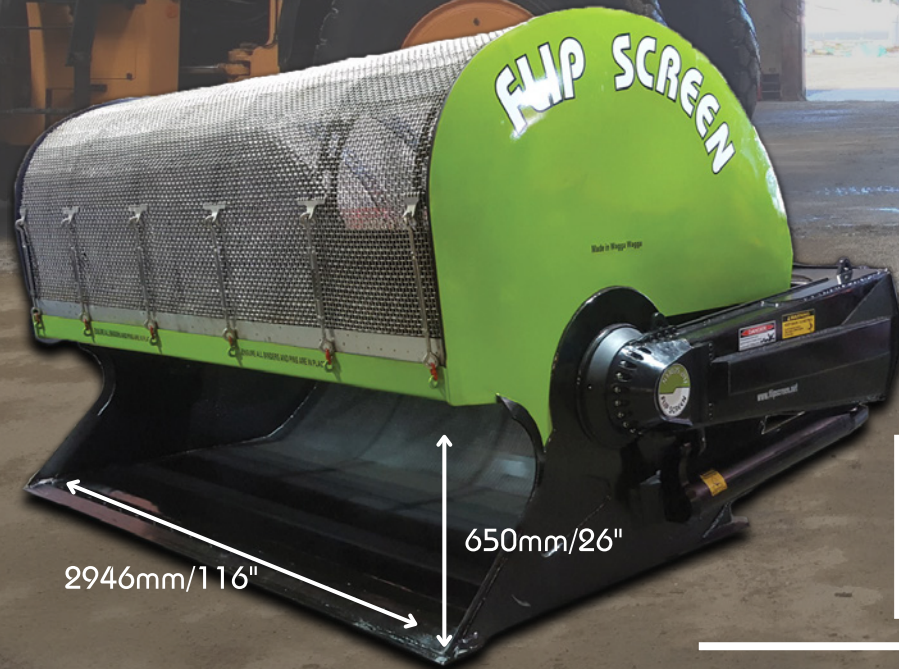
14 - 23t

Screens 314 yd³/240 m³ per hour
based on 2"/50mm mesh.



Height	Width	Length
83"/211 cm	138"/351 cm	87"/221 cm

WL300 FS



2946mm/116"

650mm/26"

3 m ³	9 m ³	2620 Kg	8.96 m ²
3.92 yd ³	11.17 yd ³	5776 lb	96.4 ft ²
Scoop Size	Total Volume	Weight	Mesh Size



15 - 23t

Screens 366 yd³/280 m³ per hour
based on 2"/50mm mesh.



Height	Width	Length
83"/211 cm	138"/351 cm	87"/221 cm



WL350 FS



3.5 m ³	9.5 m ³	2620 Kg	8.96 m ²
4.6 yd ³	12.4 yd ³	5776 lb	96.4 Ft ²
Scoop Size	Total Volume	Weight	Mesh Size



Screens 419 yd³/320 m³ per hour
based on 2"/50mm mesh.

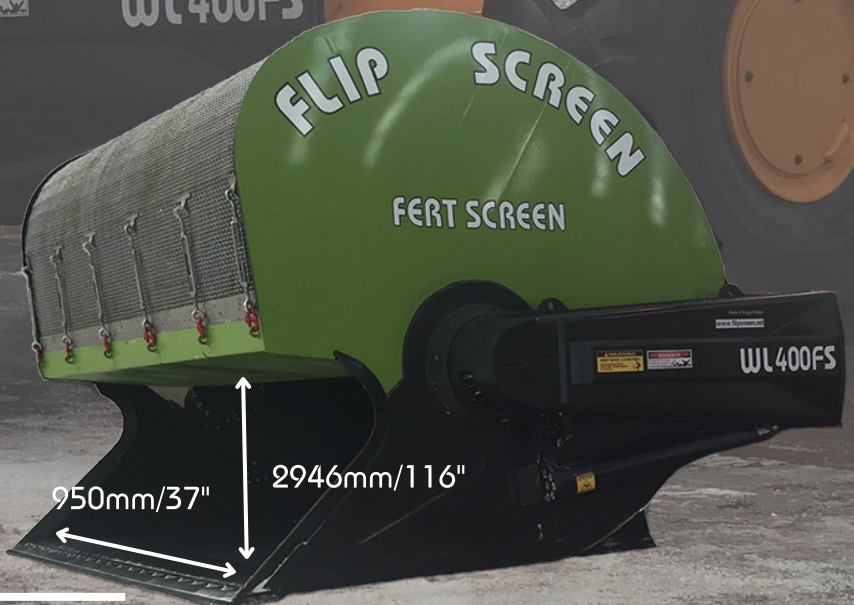


Height	Width	Length
101"/257 cm	142"/361 cm	90"/230 cm

WL400 FS



4 m ³	11.3 m ³	3683 Kg	10 m ²
5.23 yd ³	14.78 yd ³	8120 lb	108 ft ²
Scoop Size	Total Volume	Weight	Mesh Size





26 - 35t

Screens 419 yd³/320 m³ per hour
based on 2"/50mm mesh.



Height
63"/160cm

Width
97"/247cm

Length
81"/205cm

WL500 FS



5 m ³	15 m ³	4505 Kg	10 m ²
6.5 yd ³	19.6 yd ³	9932 lb	108 ft ²
Scoop Size	Total Volume	Weight	Mesh Size

€50



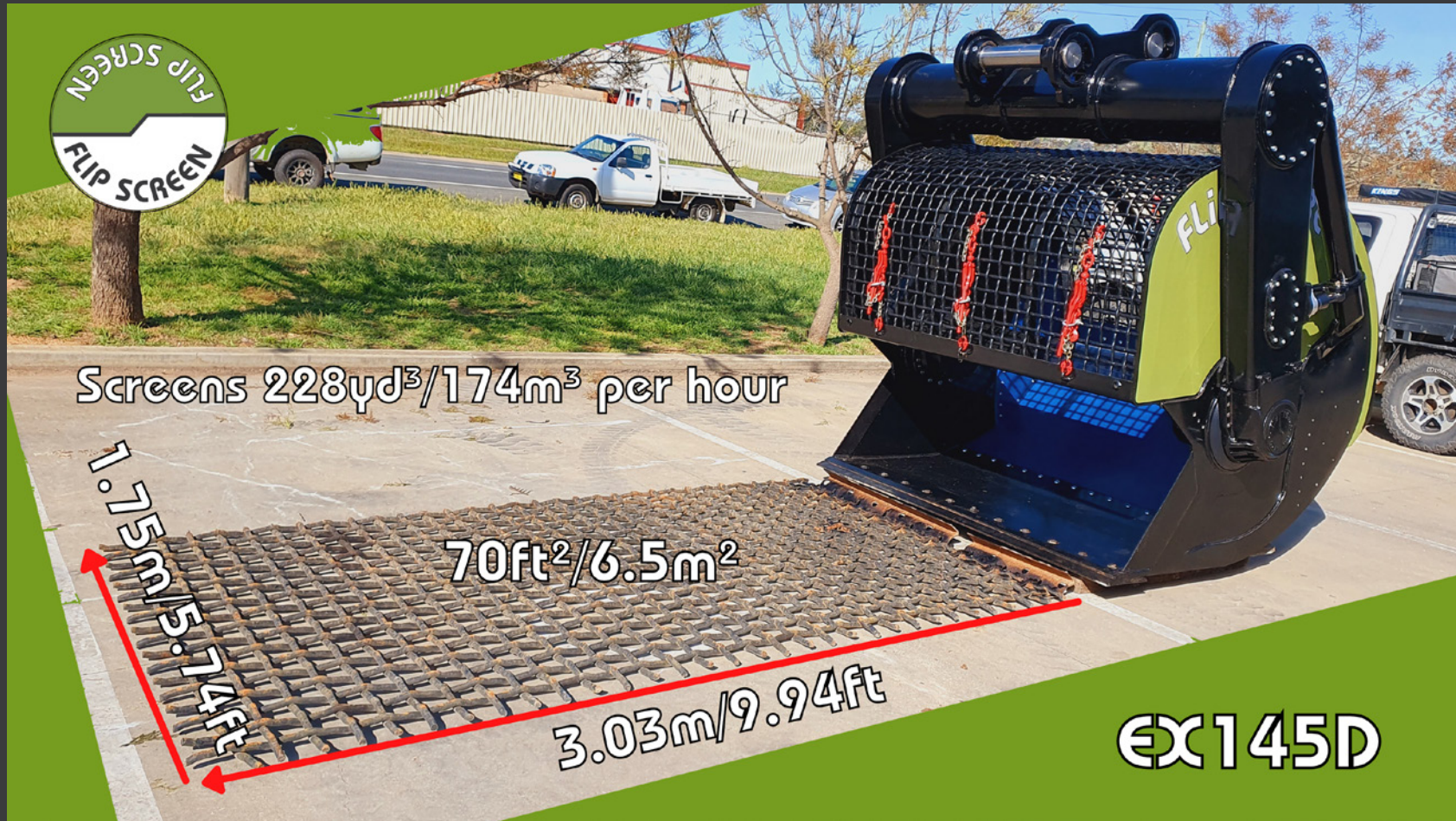
€50

E80

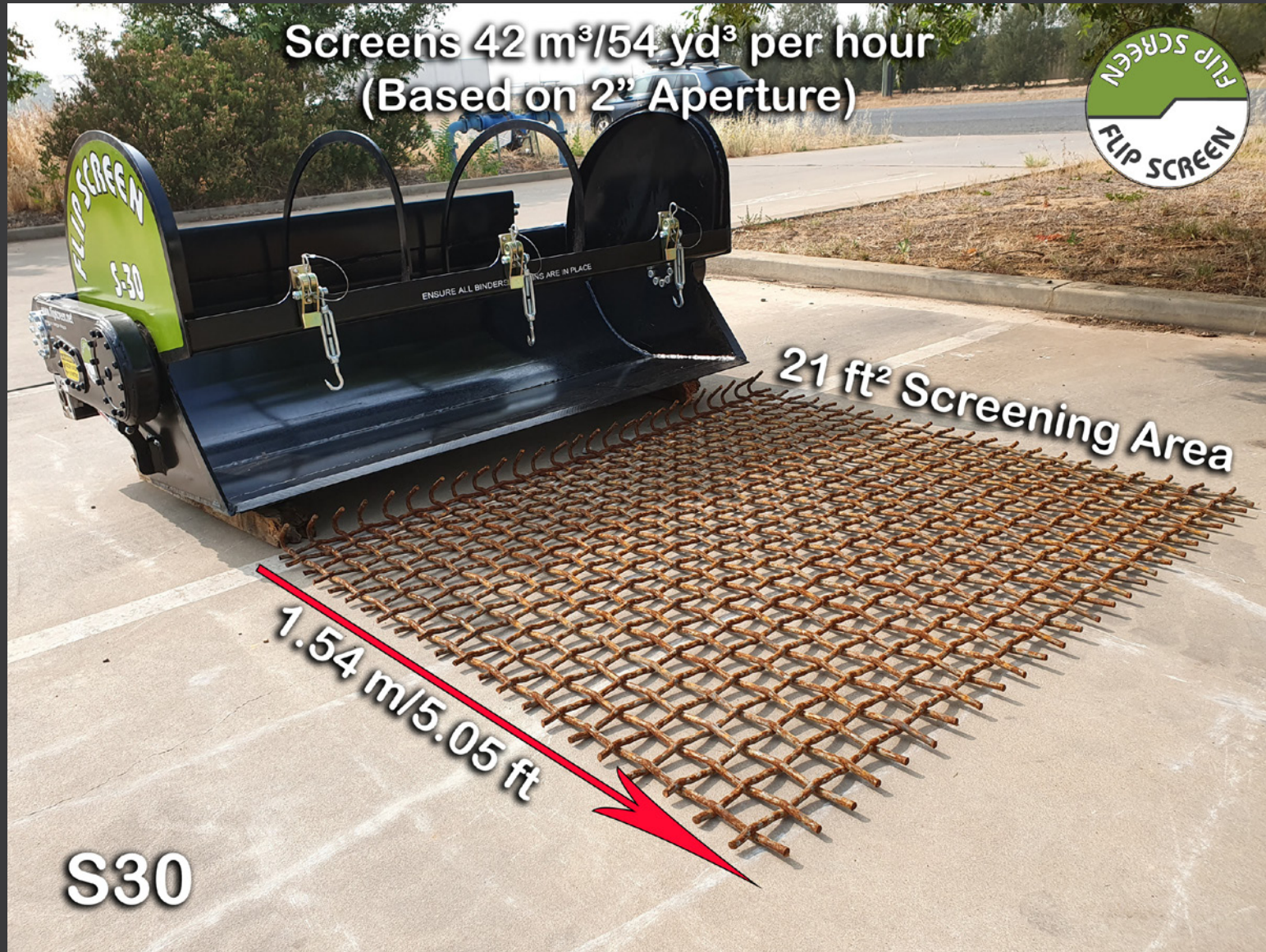


E80

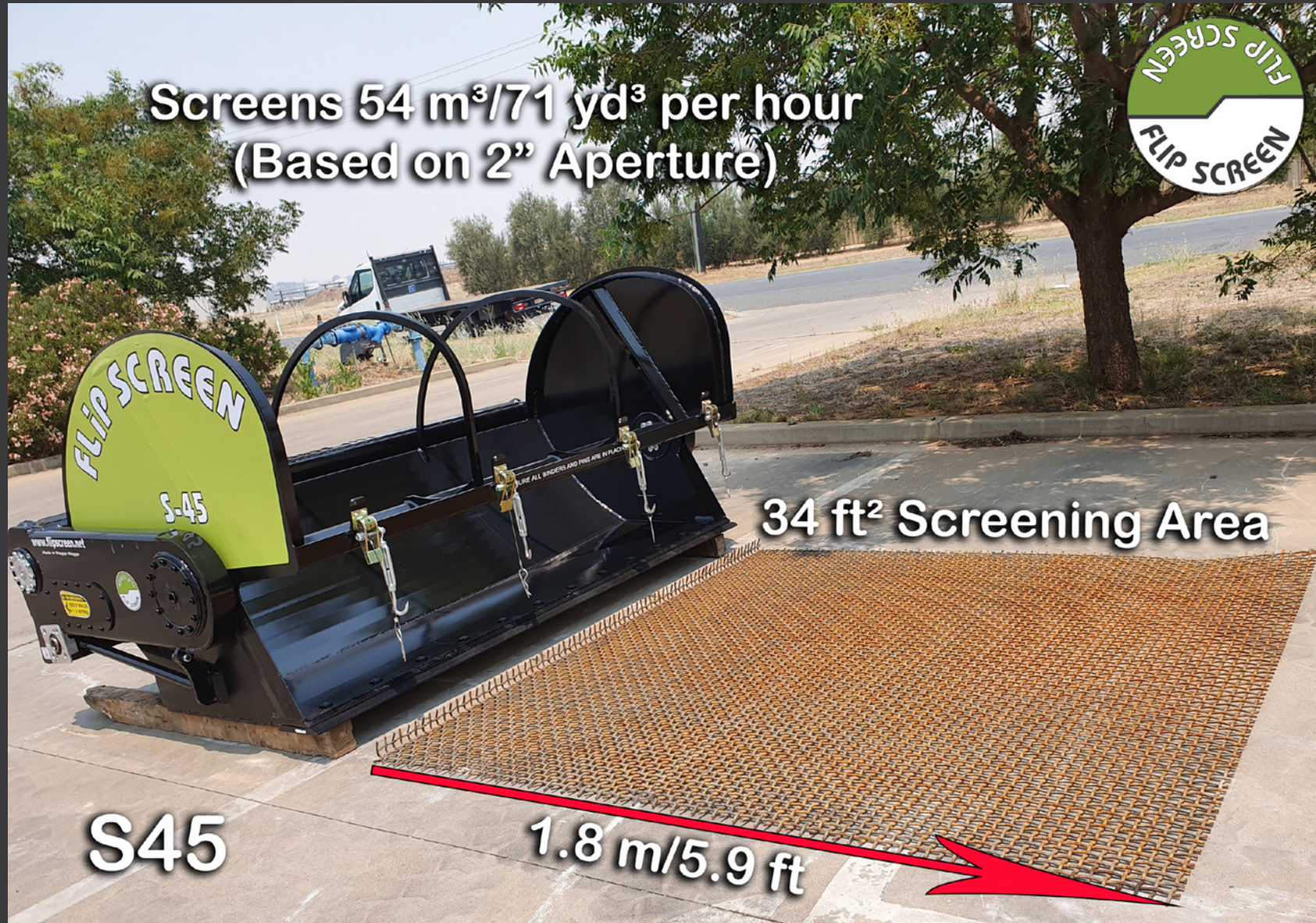
EX145D



S30



S45



BL65

Screens 72 m³/94 yd³ per hour
(Based on 2" Aperture)



46 ft² Screening Area

2.05 m/6.7 ft

BL65

WL180



SCREEN CHANGE

You can change screen size on-site, with one operator, in under 5 minutes. Custom meshes also made to suite specific customer requirements.



**6 - 300mm
1/4 - 12"
Mesh Aperture**

BRUSH KIT

Rolls with mesh on every rotation. Opens the apertures on the mesh on every rotation, preventing build-up of material and ensuring even screening of material.





MIXING PLATE

The Mixing plate with internal agitators allows material to be mixed. This removes the need for multiple attachments/equipment. Change to the mixing plate as you would a normal mesh. The mixing plate can be used for: Dry mix, wet mix, fertilizer, sand, cement, batching, etc.



DIRECT DRIVE

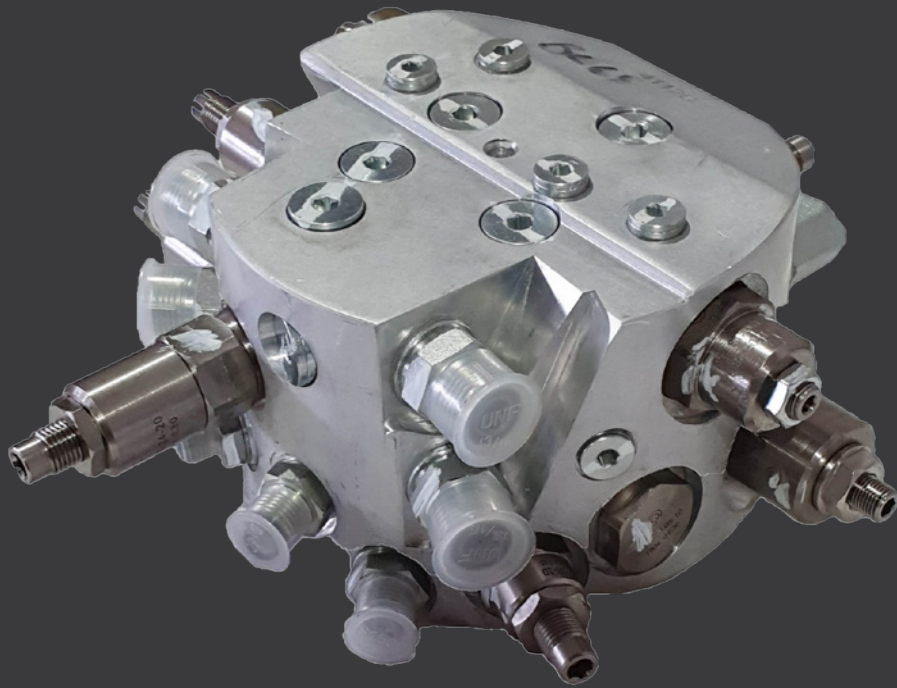
The final drive motor is attached directly to the screening bucket, eliminating chains, sprockets and internal moving parts.

- It is quieter to operate with internal hopper liners and hydraulic cylinder actuated ratchets.
- Bolt-on hitch.
- More powerful drives capable of 23200 Nm
- Direct drive creates even smoother action.
- Integrated braking system.
- More steel where it is needed and less where it is not.
- No service or greasing daily
- Service period is 1500 hours (oil change in final drive).
- No chains to service.
- Stainless steel bearings requiring no service.
- The machine is lighter.
- The hitch is closer to the cutting edge, making it more compact to operate.



SMART VALVE

Allows for any hydraulic flow and pressure without modification of the carrier. This was invented by Flipscreen Australia, in July 2012 and is a revolution in hydraulics.



FLIPSCREEN

Flipscreen USA

10990 Petal Street, STE 300, Dallas, TX, 75238

usa@flipscreen.net

US 469 892 2050

www.flipscreenglobal.com

Flipscreen Australia

235 Copland St, East Wagga Wagga,
NSW, 2650

info@flipscreen.net

02 9055 7756

www.flipscreen.net

Flipscreen Canada

10-29441 Range Road 274,
Mountain View County, AB T0M 0S0

Calgary

403 988 1402

www.flipscreenglobal.com

The world's Best Screening Attachment!
